



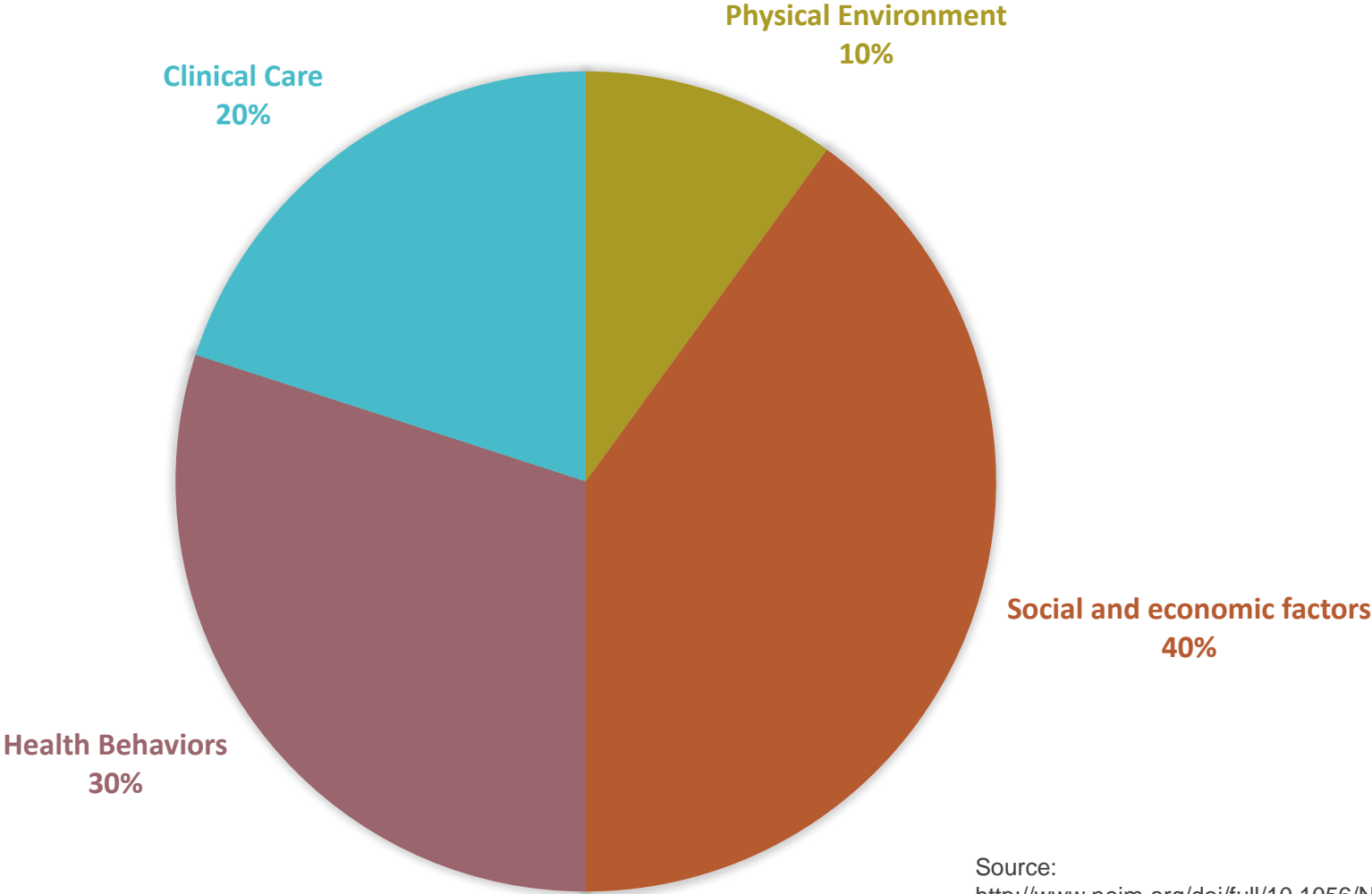
Accountable Health Communities Model

Understanding RMHP's AHCM

February 2019



FACTORS DRIVING HEALTH OUTCOMES



Source:
<http://www.nejm.org/doi/full/10.1056/NEJMsa073350#t=article>

MAJOR CAUSES OF DEATH: THEN & NOW

We have more power over our health than any other generation in history.

1900

- **Pneumonia & flu**
- **Tuberculosis**
- **Digestive Disease**
- **Heart Disease**

2015

- **Heart Disease**
- **Cancer**
- **Lung Disease**
- **Stroke**

Source:
<https://2rdnmg1qbg403gumla1v9i2h-wpengine.netdna-ssl.com/wp-content/uploads/sites/3/2014/10/15-HHB-2258-How-We-Die-FINAL.pdf>



SYSTEM PARALLELS: U.S. POSTAL SERVICE

- Is the goal of the postal service to help Americans communicate or to deliver mail?
- **Is the goal of the health care system to improve health or deliver healthcare?**



THE ACCOUNTABLE HEALTH COMMUNITIES MODEL

CONVENING

A community infrastructure for supporting addressing social needs. Community Leads identify gaps in social needs and create partnerships to address gaps

SOCIAL NEEDS SCREENING

Screening for social needs for clinical sites and providing referrals

COMMUNITY NAVIGATION

All screened individuals who have 2 or more ER visits in the last year and a social need should receive community navigation



AHCM SCREENING

We aim to screen 100,000:

Medicare Enrollees

Medicare-Medicaid Enrollees

Medicaid Enrollees

In Clinical Settings including:

Primary Care

Behavioral Health

Hospitals

For six social needs:

Food

Housing

Transportation

Utilities

Interpersonal Violence

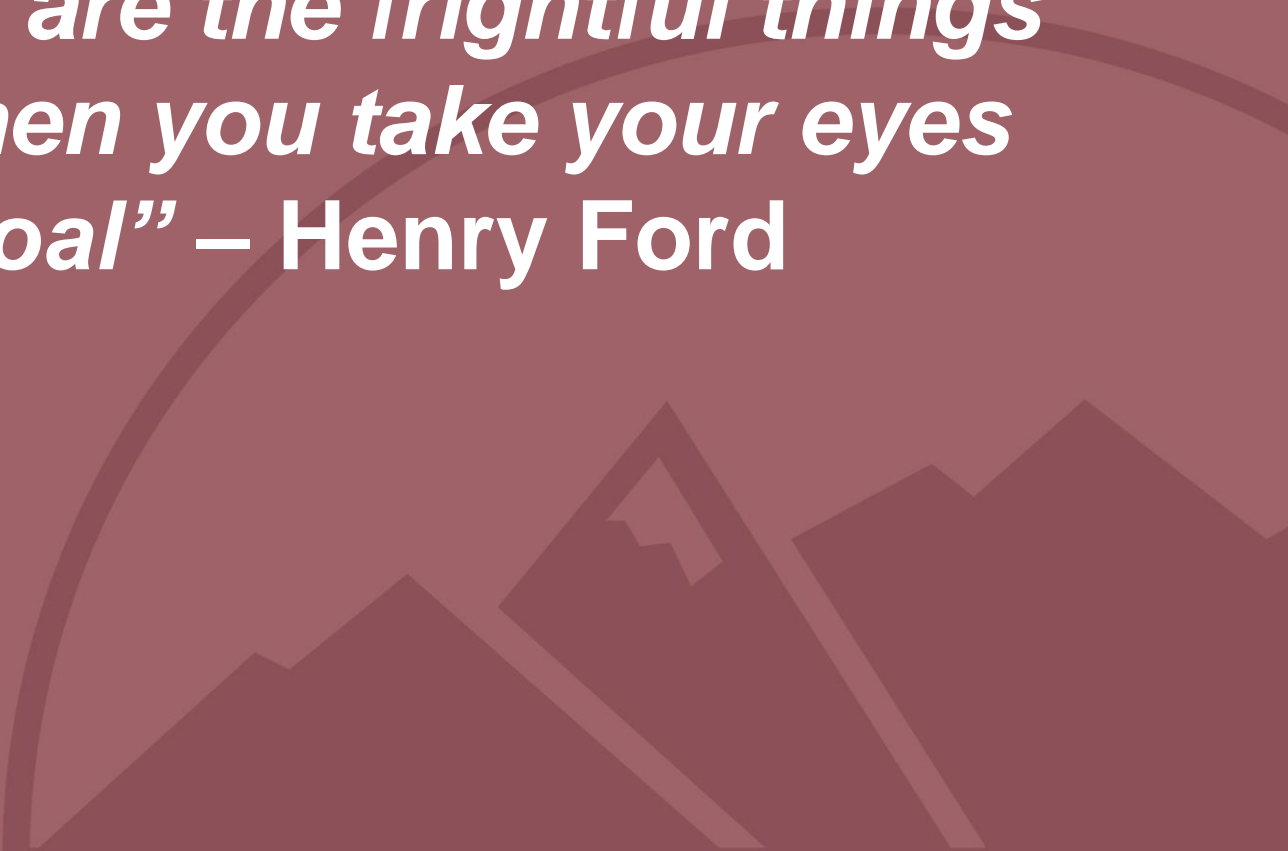
Social Isolation

Using the:

Quality Health Network
Community Resource Network



“Obstacles are the frightful things you see when you take your eyes off of the goal” – Henry Ford



AHCM SCREENING

“The last time I looked in my textbook, the specific therapy for malnutrition was, in fact, food”

– Dr. Jack Geiger

Identify social needs to enhance care planning



AHCM SCREENING



Provide information on community resources

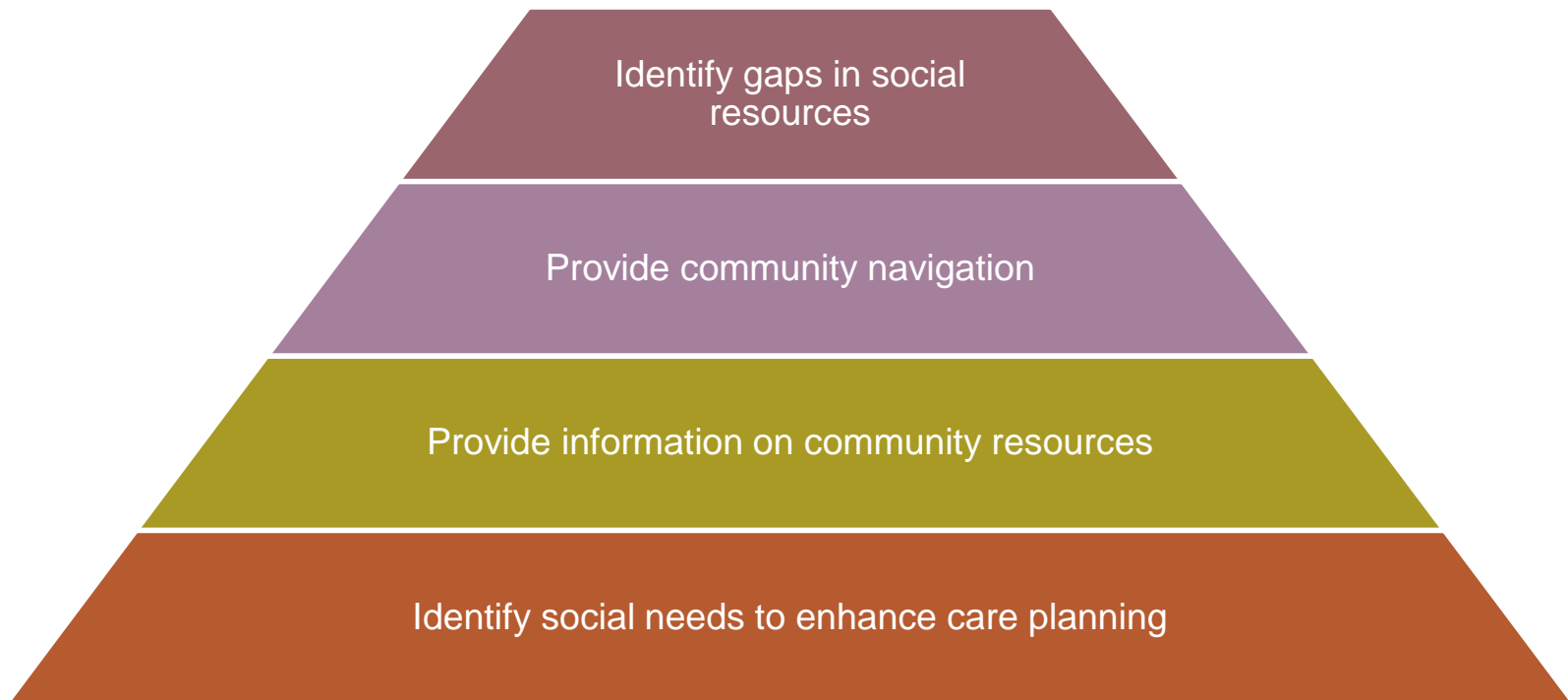
Identify social needs to enhance care planning



AHCM SCREENING



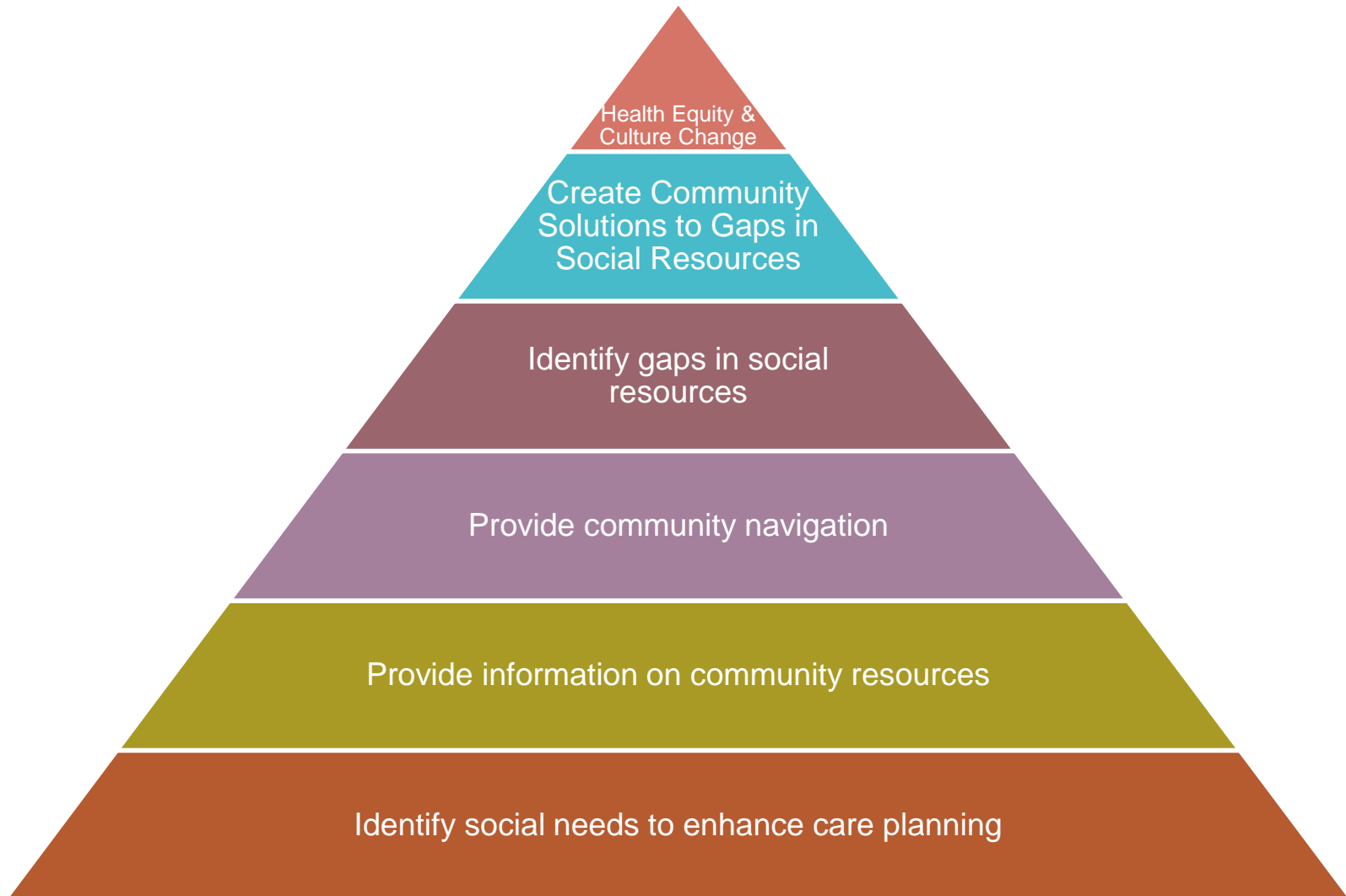
AHCM SCREENING



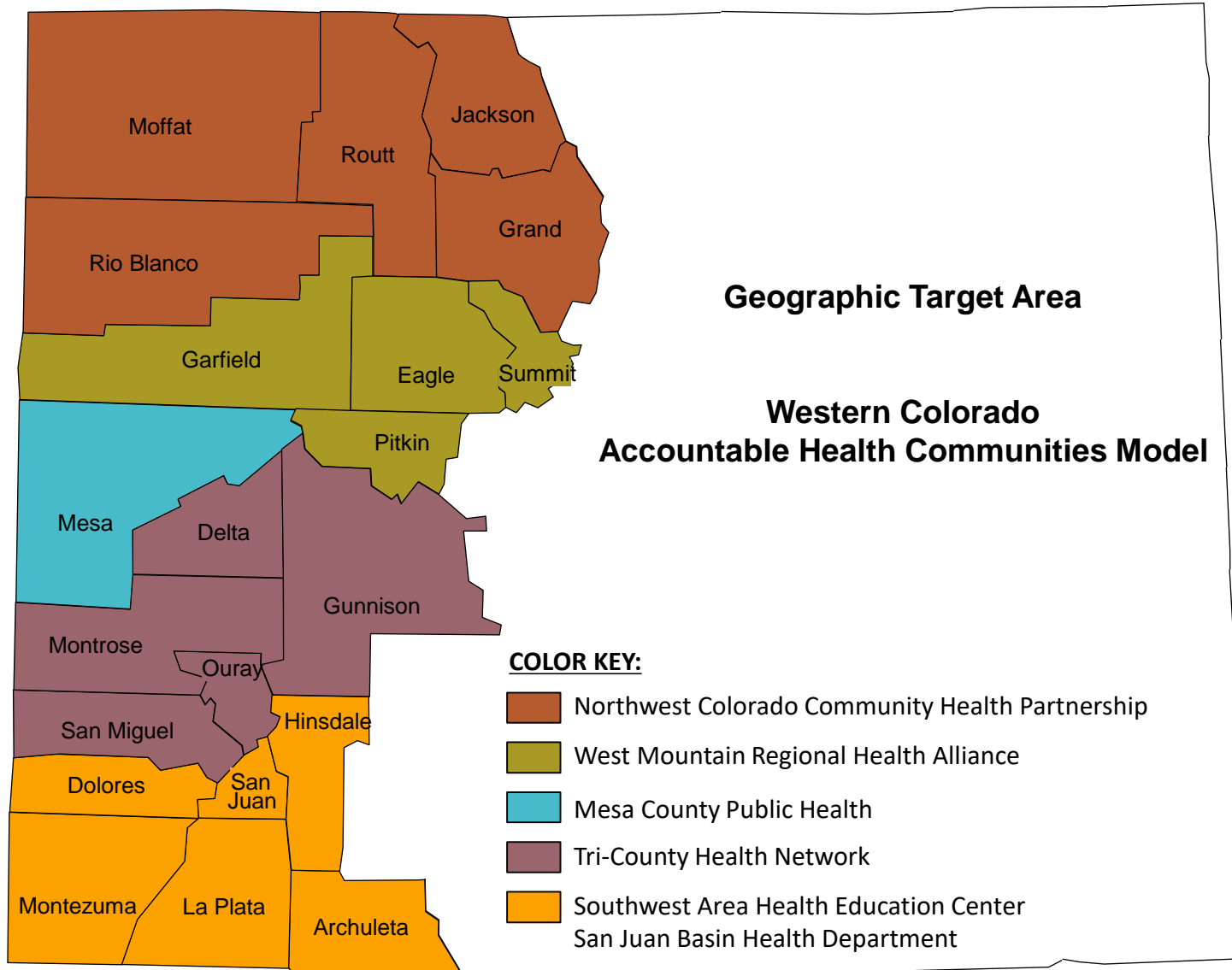
AHCM SCREENING



AHCM SCREENING



AHCM COMMUNITY LEADS



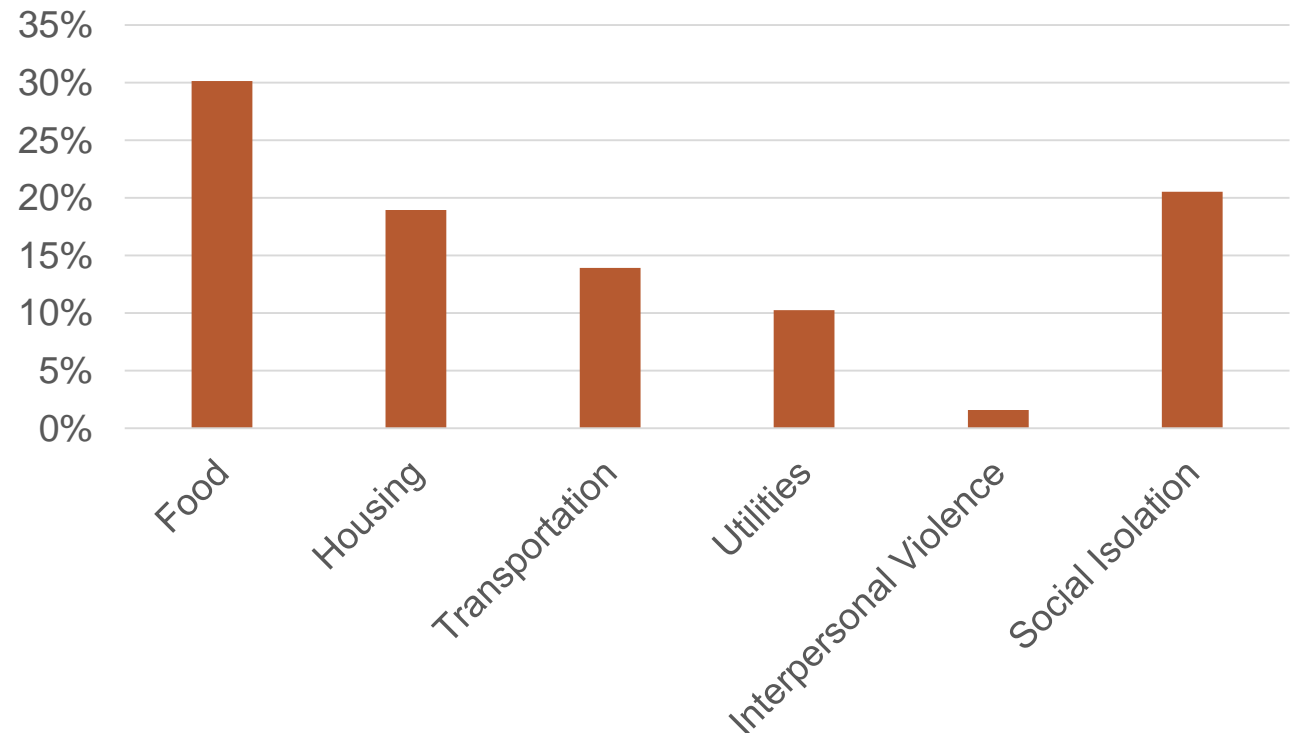
CLINICAL SITES SCREENING

- River Valley Family Medicine
- Mountain Family
- Gunnison Valley Health
- Summit Community Care Clinic
- Mid Valley Practice
- Northwest Colorado Health
- Pioneers Hospital
- Ebert Family Clinic
- Memorial Regional Health
- A Kidz Clinic
- Aspen Valley Hospital
- Foresight Family Physicians
- Mind Springs
- Primary Care Partners
- Pediatric Partners of the Southwest
- Pediatric Associates of Durango
- Northside Clinic
- Valley View Hospital
- Uncompahgre Medical Center
- Rangely District Hospital
- Center for Mental Health



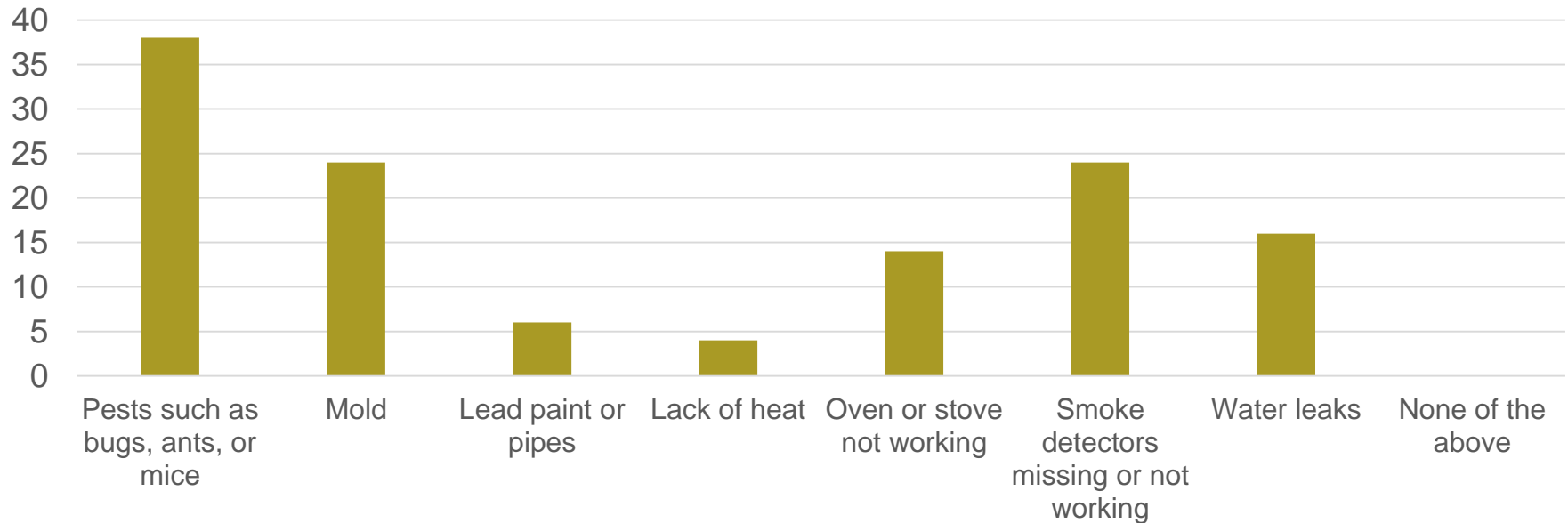
ACHM SCREENING AT RIVER VALLEY FAMILY HEALTH CENTER

- River Valley Family Health Center screened **438 Members** in the month of August
- Out of all of those Members, **49 met the AHCM criteria for “Navigation”** (two ER visits and one social need)



AHCM SCREENING CAPTURES BOTH RISK & ACUTE NEED

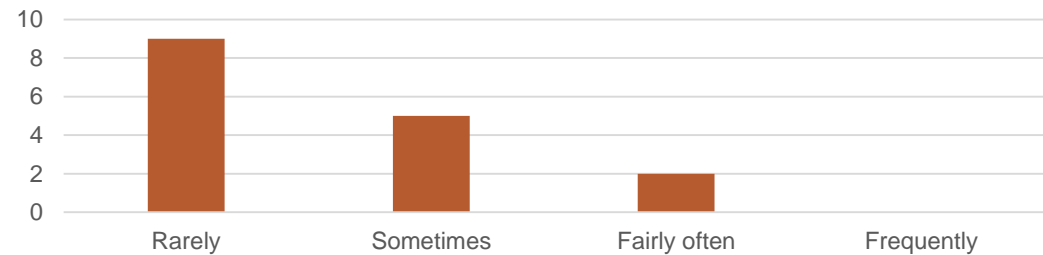
River Valley Family Health Center Members Responding with Housing Quality Issues



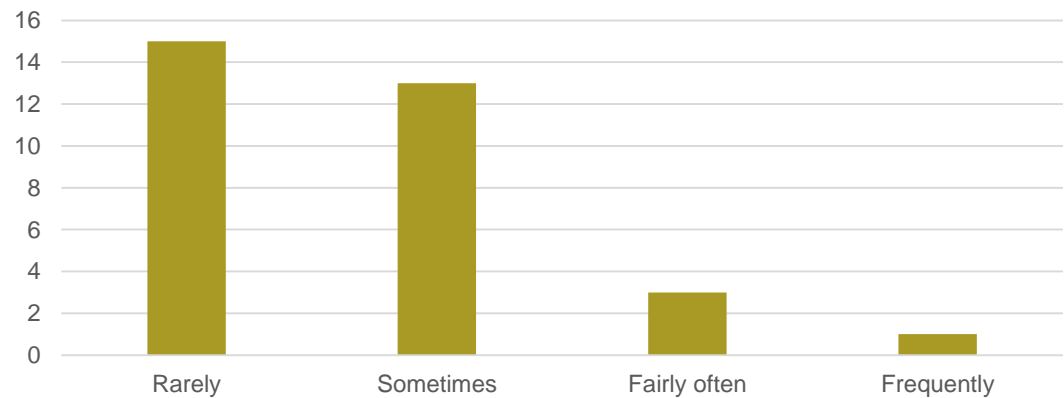
A BROADER LOOK AT SAFETY

River Valley Family Health Center results

How often does anyone, including family and friends, physically hurt you?

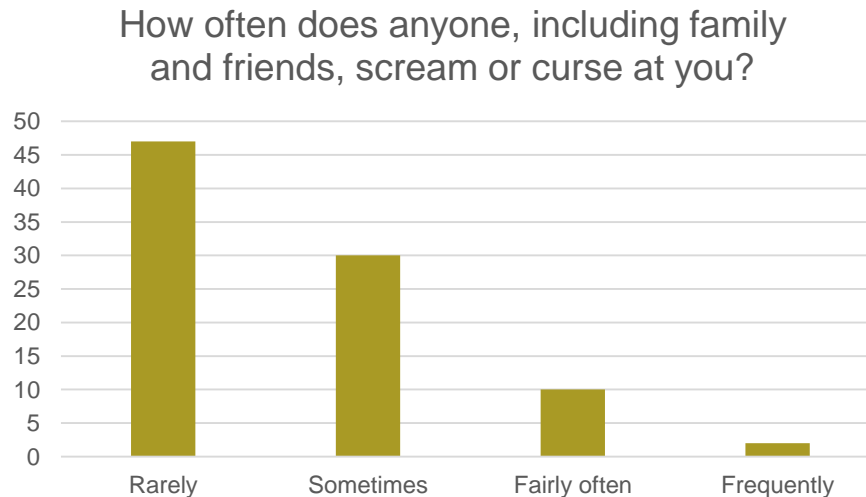
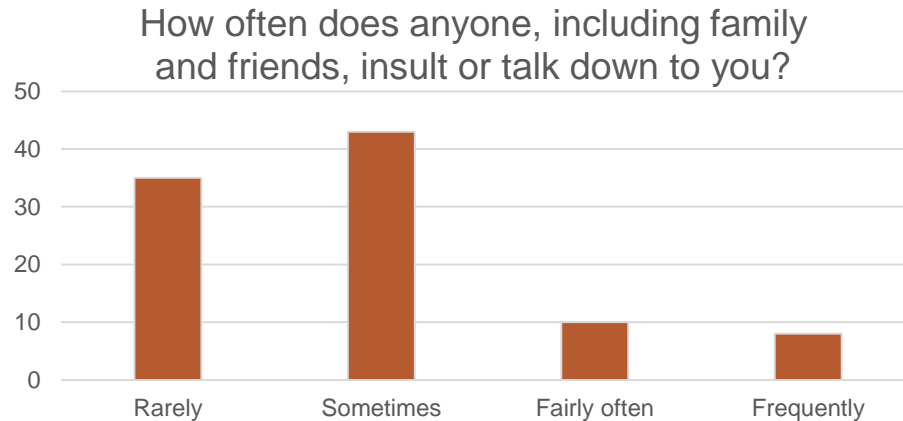


How often does anyone, including family and friends, threaten you with harm?



A BROADER LOOK AT SAFETY

River Valley Family Health Center results (cont'd)



SOCIAL NEEDS SCREENING: THE OPPORTUNITY

- Improved Clinical Care Plans
- Improved awareness of Community Resources
- Clinical sites prepared for value based purchasing
- Culture change about what is health
- Increased investments in Evidence Based Community resources
- A national conversation about Social Determinants of Health and Healthcare informed by rural Colorado



CONTACT RMHP TO LEARN MORE

Kathryn Jantz

AHCM Program Director

Rocky Mountain Health Plans

kathryn.jantz@rmhp.org

303-638-9897

Sally Henry

AHCM Project Coordinator

Rocky Mountain Health Plans

sally.henry@rmhp.org

970-640-7722



MAKING A DIFFERENCE IN WESTERN COLORADO

