



The Colorado  
Health Foundation™

# COLORADO HEALTH ACCESS SURVEY



April 20, 2026

## WMRHA Quarterly Meeting



COLORADO HEALTH INSTITUTE

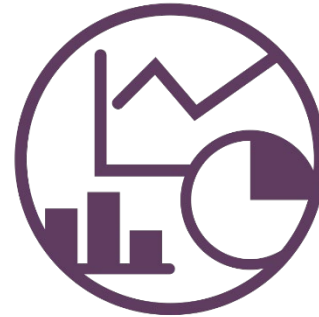
**Emily Johnson** Managing Director of Research and Programs

**Lindsey Whittington** Data and Analysis Manager

# CHI strengthens communities and systems with trusted analysis and collaborative solutions to improve health.



**We answer critical questions.**



**We make sense of complex issues.**



**We support others to reach actionable solutions.**

# Today's Presenters

---



**Emily  
Johnson**  
Managing Director of  
Research and Programs



**Lindsey  
Whittington**  
Data and  
Analysis Manager

# About the CHAS

# Colorado's premier source of data on coverage, access, social factors, and more.



- Data trends back to 2009
- Responsive to community needs and emerging issues
- Free and publicly available data in a variety of formats

# CHAS Nuts and Bolts

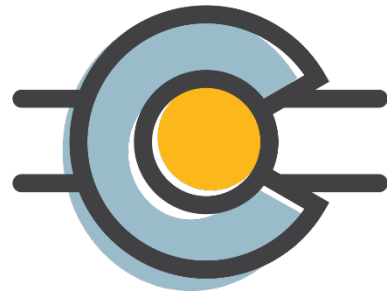
---



The 2025 CHAS  
was conducted from  
**February to July 2025**



**Over 10,000 Coloradans**  
responded online or by phone,  
in English or Spanish.



Data are weighted to be  
**representative of all  
Coloradans or specific  
communities** within Colorado.

# Thank You

# 2025 Sponsors

## LEAD SPONSORS



The Colorado Health Foundation™



**THE  
COLORADO  
TRUST**

A Health Equity Foundation

## LAUNCH SPONSOR



**ROCKY MOUNTAIN  
HEALTH PLANS®**

A UnitedHealthcare Company

## ADDITIONAL SPONSORS



**COLORADO**  
Department of Health Care  
Policy & Financing



**COLORADO**  
Department of  
Labor and Employment



**COLORADO**  
Department of Public  
Health & Environment



**COLORADO**  
Department of  
Regulatory Agencies  
Division of Insurance



**OeHI**  
Office of eHealth Innovation



**c|h|a**  
Colorado Hospital Association



**contexture®**  
Creating connections. Improving lives.



**DELTA DENTAL®**  
DELTA DENTAL OF COLORADO FOUNDATION



**DENVER**  
PUBLIC HEALTH &  
ENVIRONMENT



**Health District**



**KAISER PERMANENTE®**  
COLORADO

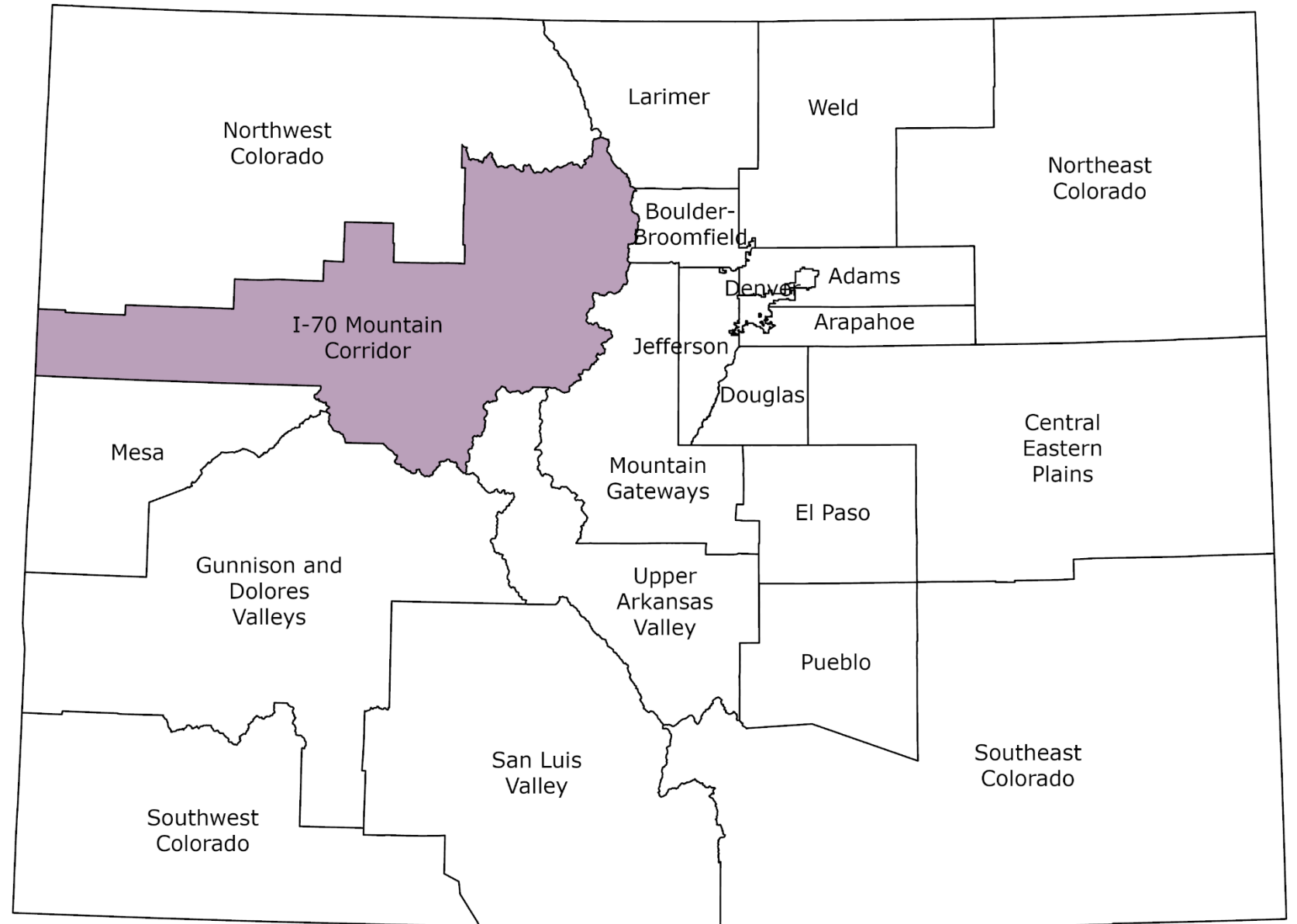


**STEADMAN  
GROUP, LLC**

**COLORADO  
HEALTH ACCESS SURVEY**

COLORADO HEALTH INSTITUTE

# A Note on Regions



# Key CHAS Takeaways

- Many I-70 Mountain Corridor residents **depend on the individual market** for insurance coverage.
- Fewer I-70 Mountain Corridor residents **reported cost as a barrier to care** compared to 2019.
- Even so, many residents are having to make **tradeoffs between paying for health care, housing, or food.**

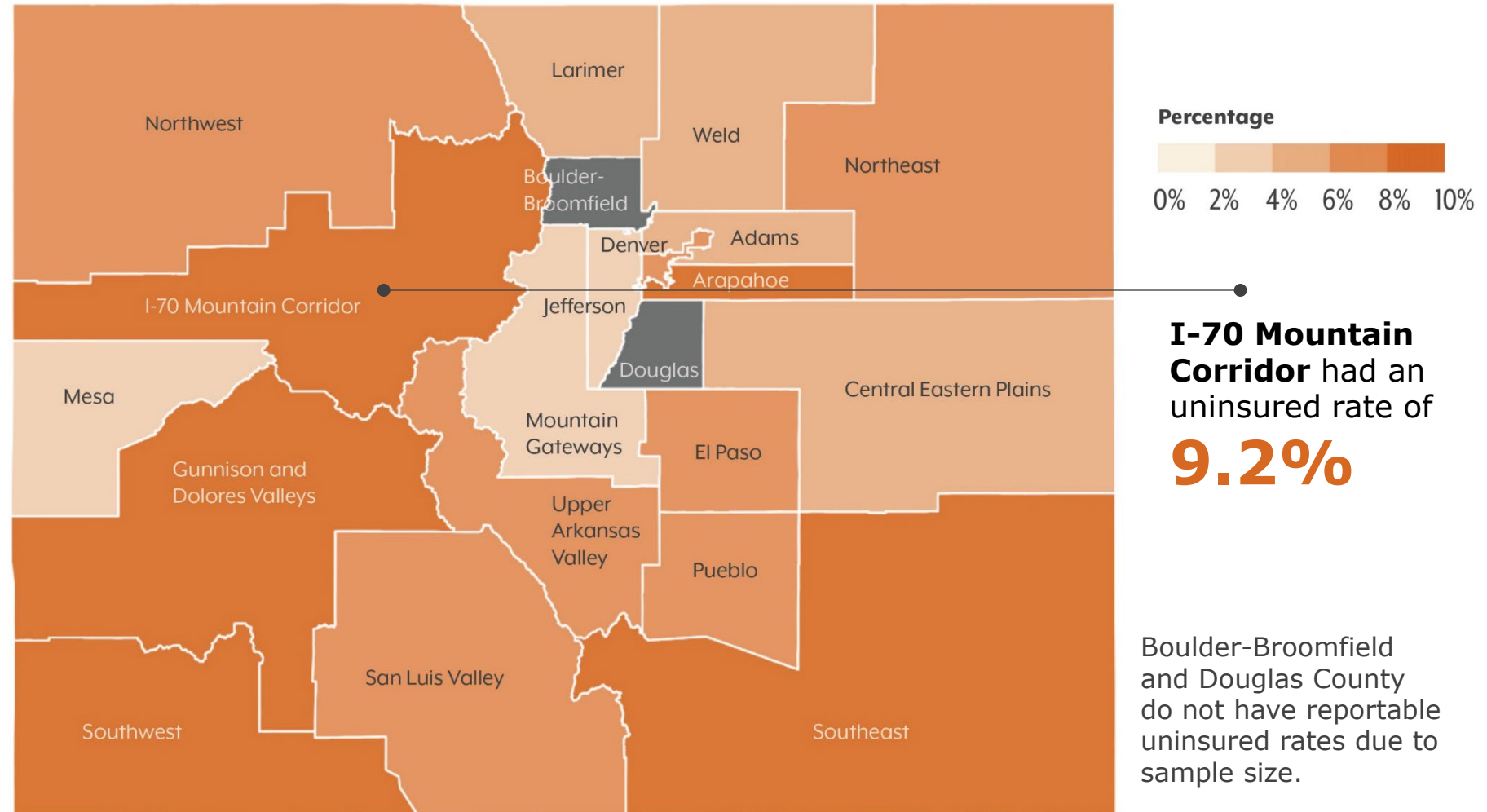


# Insurance Coverage

**I-70 Mountain Corridor has a higher rate of uninsurance than its neighbors.**

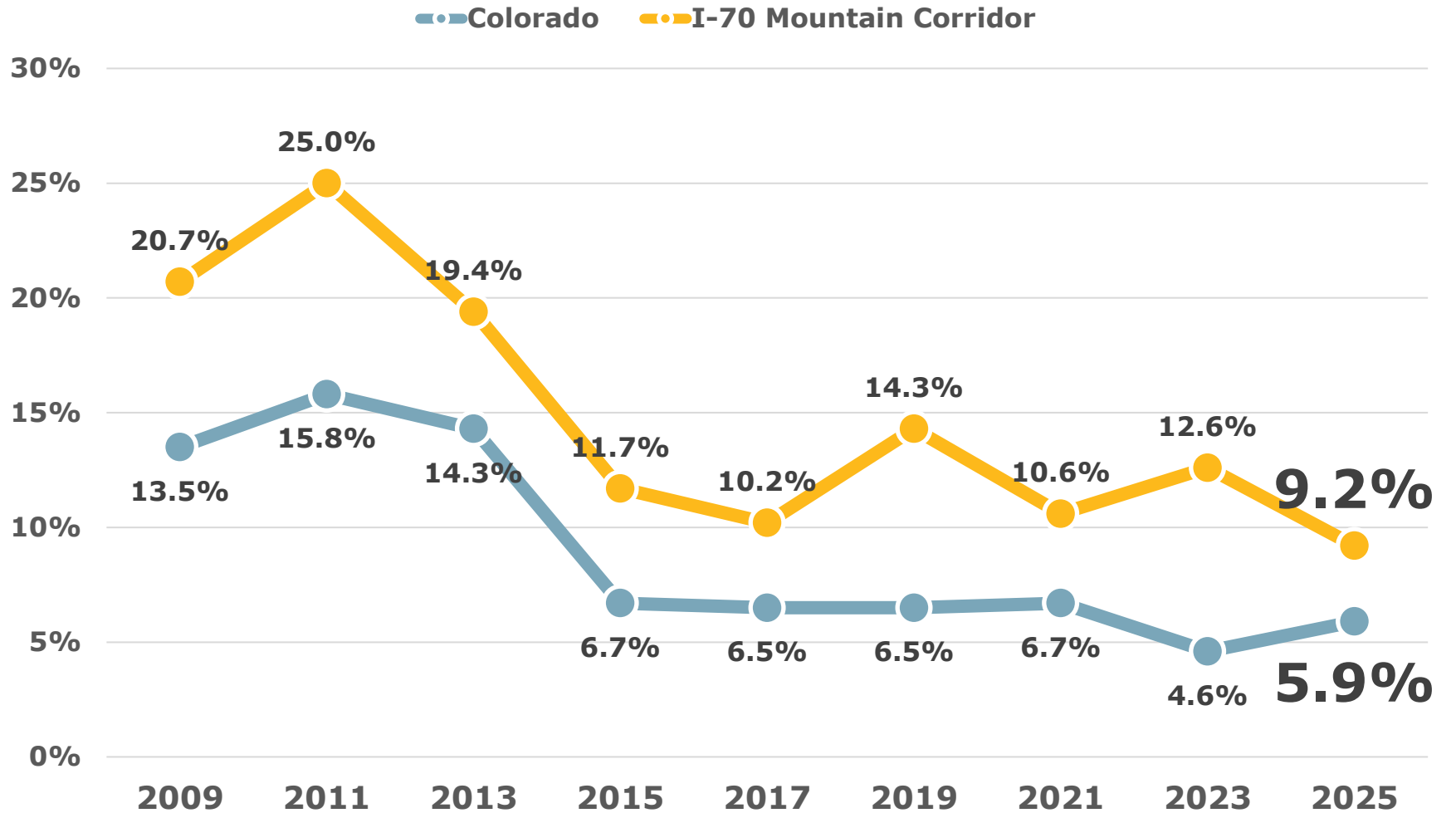
**Topic:** Percentage of Coloradans who lack health insurance.

**Population:** All Coloradans, by Health Statistics Region. **Year:** 2025.



**I-70 Mountain Corridor uninsured rates have been more volatile in the post-ACA era.**

**Topic:** Percentage of Coloradans who lack health insurance.  
**Population:** All Coloradans, by geography. **Years:** 2009-2025.

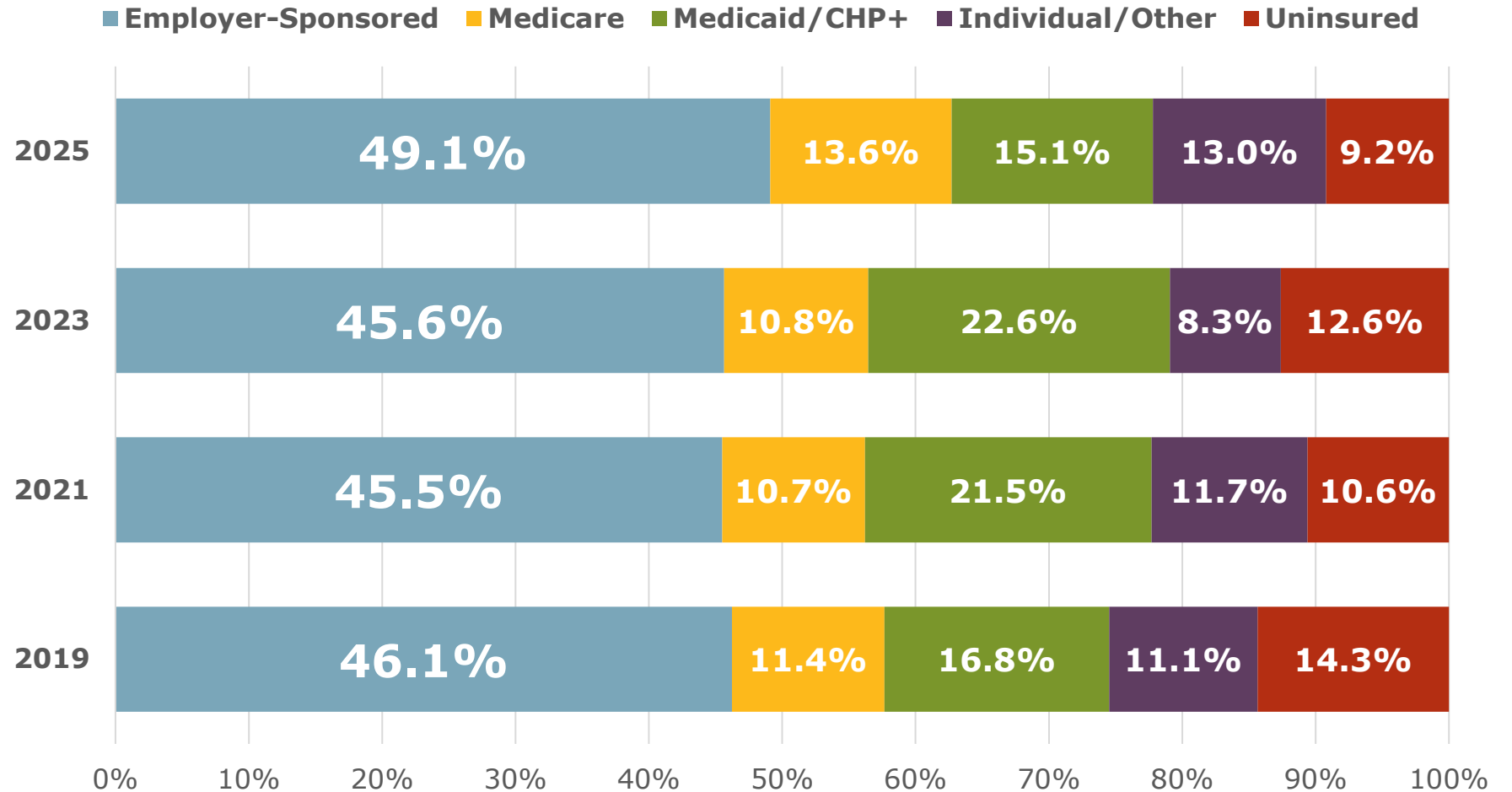


Many I-70 Mountain Corridor residents rely on the individual marketplace for coverage.

Topic:

Insurance coverage distribution over time.

Population: I-70 Mountain Corridor residents, by coverage type. Years: 2021-2025.





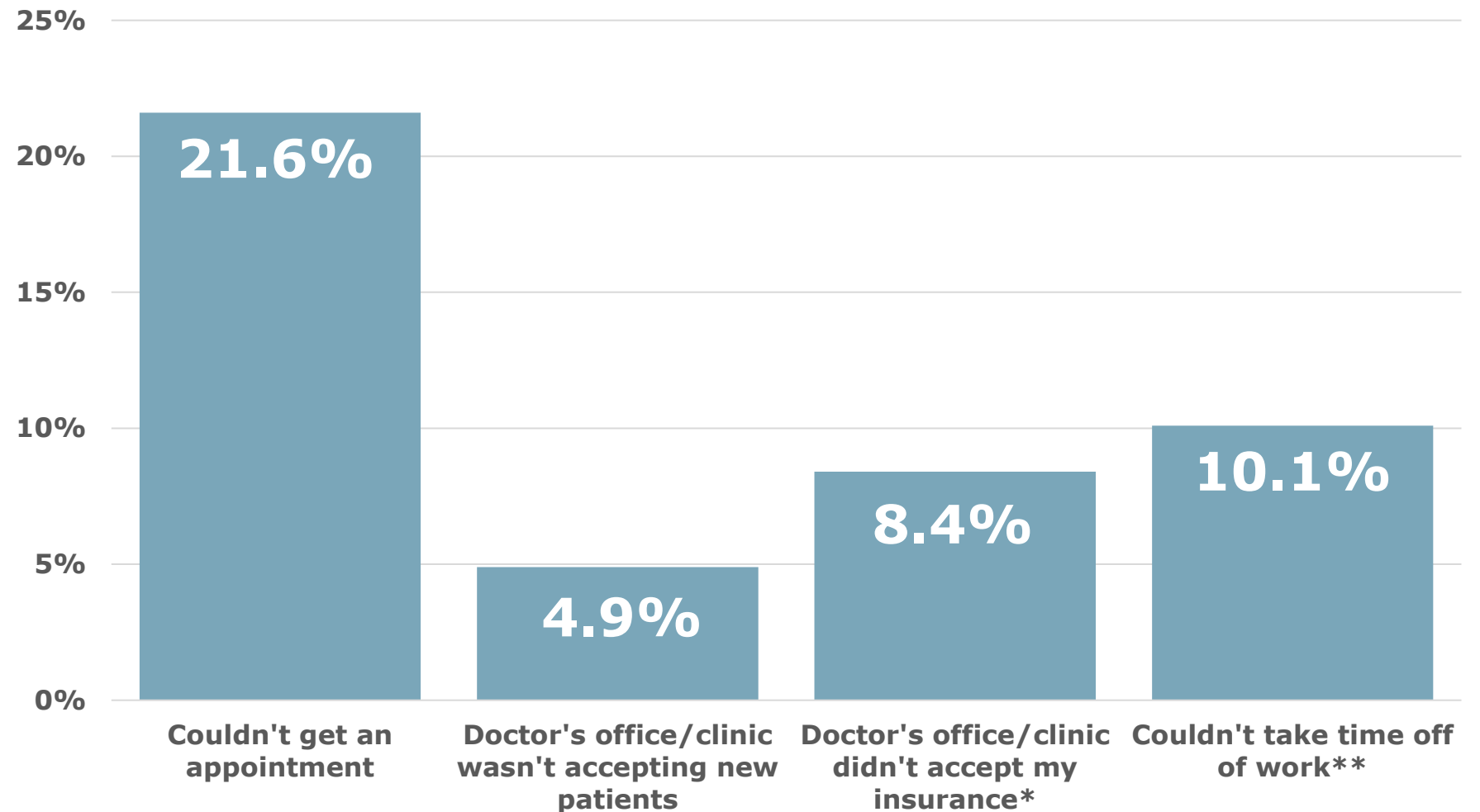
# **Barriers to Accessing Health Care**

Over one in five I-70 Mountain Corridor residents had issues getting needed appointments.

**Topic:**

Reasons people could not get a doctor's appointment.

**Population:** I-70 Mountain Corridor residents. **Year:** 2025.



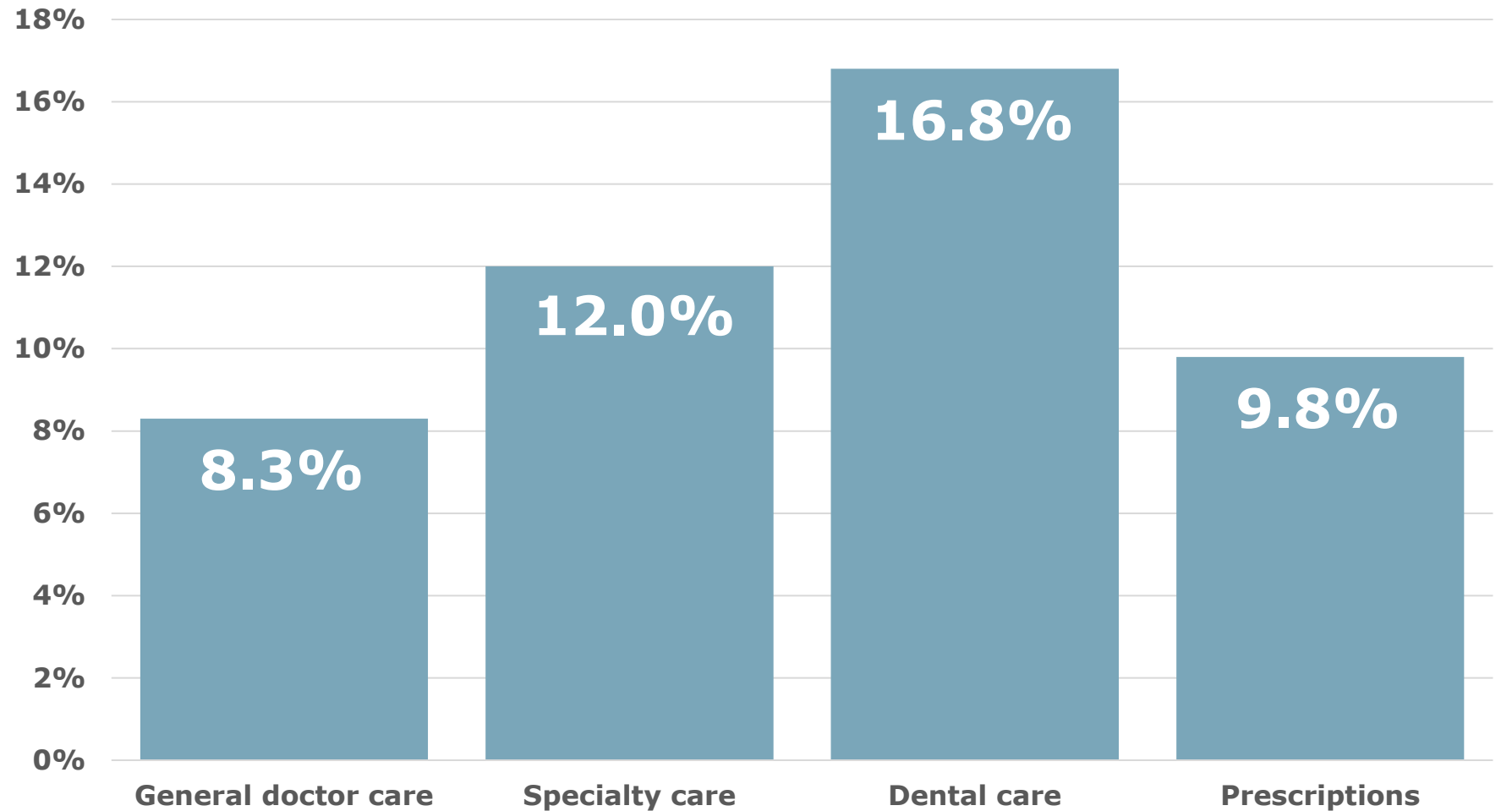
\*Asked of those who are insured. \*\*Asked of those who were employed and age 16+.

**I-70 Mountain Corridor residents are most affected by dental and specialty care affordability issues.**

**Topic:**

Percentage reporting cost as a barrier to different types of care.

**Population:** I-70 Mountain Corridor residents. **Year:** 2025.

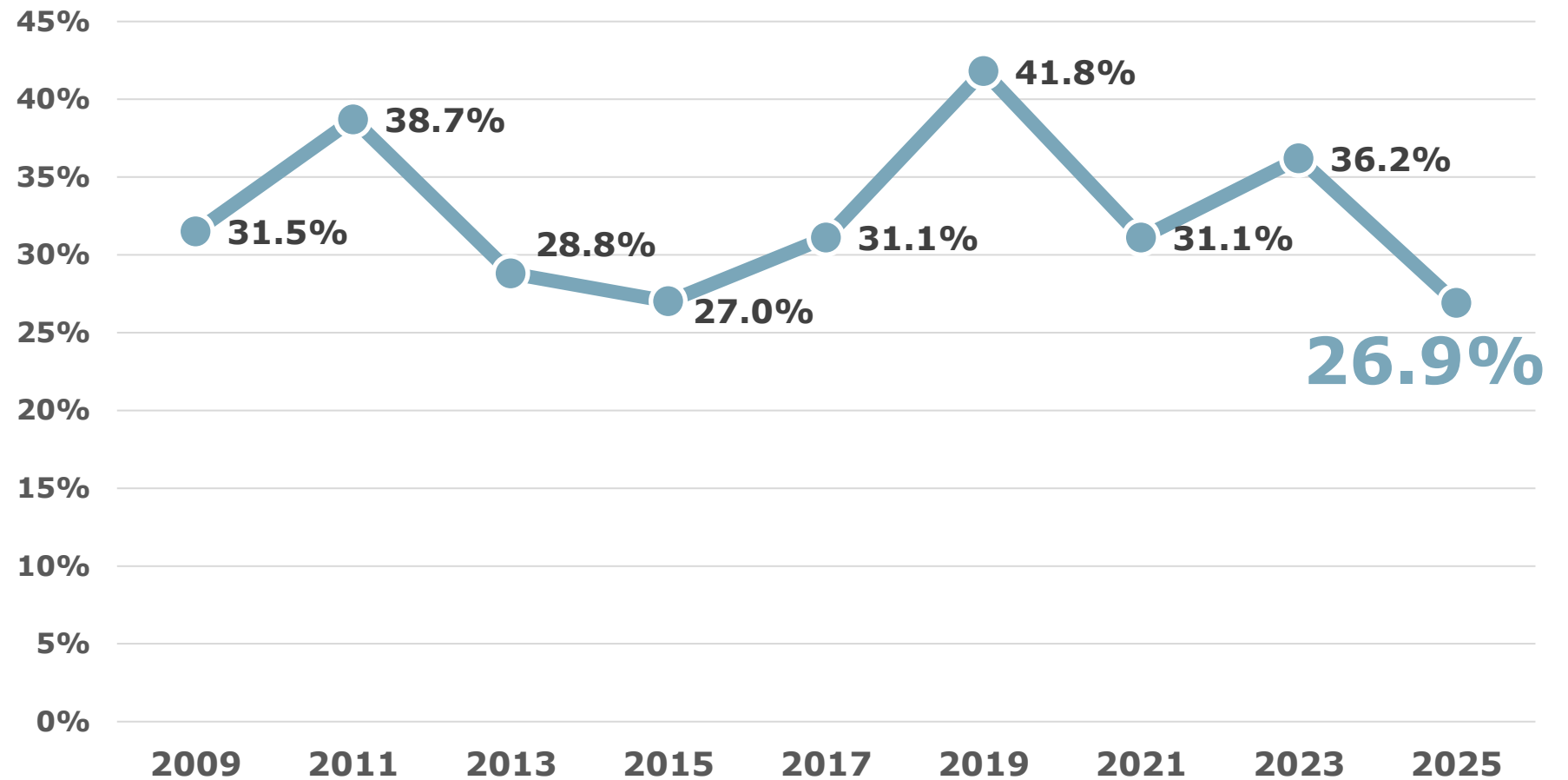


# Fewer I-70 Mountain Corridor residents reported cost as a barrier in 2025.

## Topic:

Percentage reporting cost as a barrier to health care (including general doctor care, specialty care, dental care, and prescriptions).

**Population:** I-70 Mountain Corridor residents. **Years:** 2009-2025.





# Affordability Tradeoffs



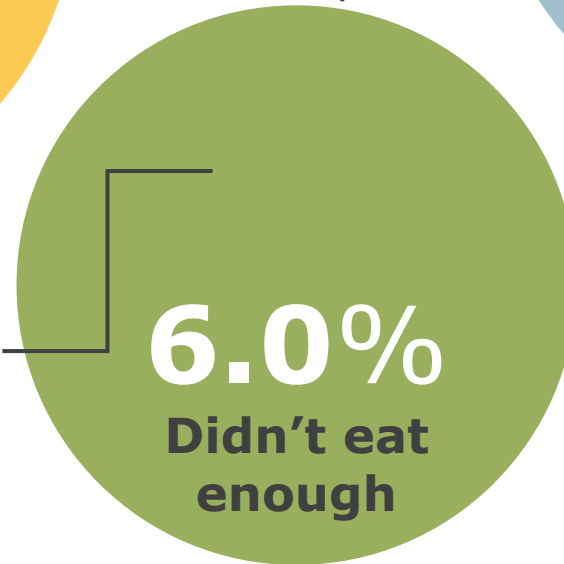


Many I-70 Mountain Corridor residents have trouble paying for health care, housing, or food.

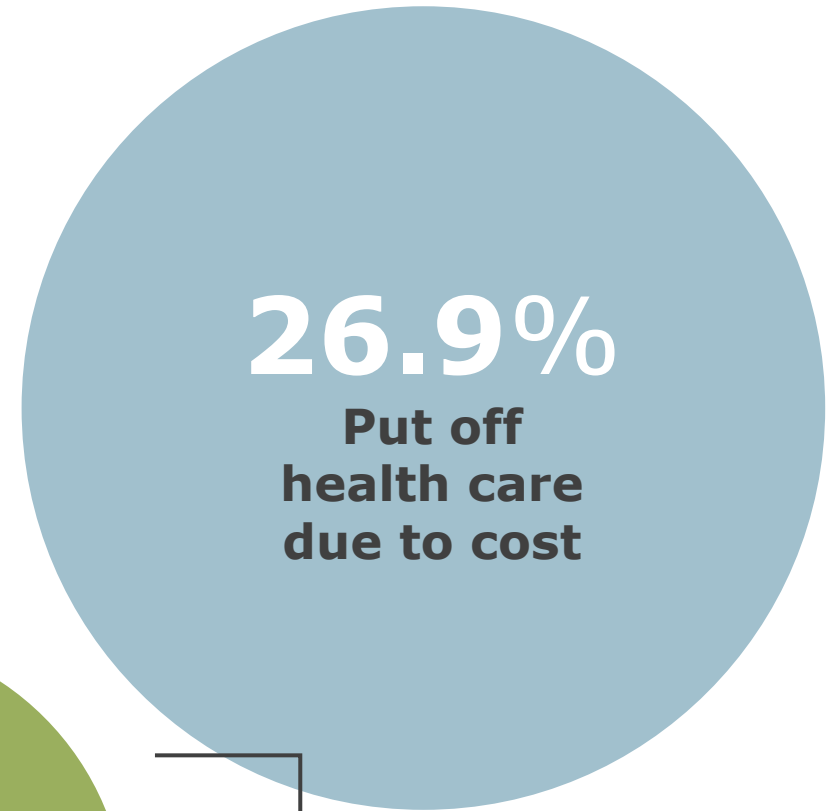


**5.6%**  
~10,200 people

**3.2%**  
~5,900 people



**3.2%**  
~5,900 people



**5.2%**  
~9,350 people

# Key CHAS Takeaways

- Many I-70 Mountain Corridor residents **depend on the individual market** for insurance coverage.
- Fewer I-70 Mountain Corridor residents **reported cost as a barrier to care** compared to 2019.
- Even so, many residents are having to make **tradeoffs between paying for health care, housing, or food.**

Data are available on many more topics!

Child Care  
Reproductive Health  
Transportation  
Culturally Responsive Care  
Long COVID  
Telemedicine  
Dismissive Treatment  
Digital Equity  
Behavioral Health  
Care Coordination  
Oral Health  
Climate

# 2025 CHAS

Data and More

- Regional profiles
- Dashboard
- Survey report
- Workbooks
- Public use file
- Methods report
- Survey questionnaire
- More to come —  
*tell us what would be helpful!*



**colo.health/  
CHAS25**



[copulsepoll.org](https://copulsepoll.org)

# The Colorado Health Foundation Poll

2025 Findings



# About The Colorado Health Foundation

- CHF is a statewide non-profit, nonpartisan organization with a mission to improve the health and well-being of Coloradans.
- We collaborate with organizations and communities across Colorado to break down barriers to achieving health and well-being.
- We believe that health and well-being can be in reach for everyone.





# About Pulse

- Launched in 2020, it's an annual poll that takes the *pulse* of Coloradans on a range of issues that impact health and well-being.
- The Colorado Health Foundation partners with a bipartisan team of public opinion researchers to conduct the poll.
- Pulse helps us hear from people beyond our usual circles, giving us a deeper understanding of what Coloradans are experiencing.
- We survey more than 2,000 adults across the state, and share all the results with policymakers, community leaders and the media.
- Interactive data dashboard available at [copulsepoll.org](https://copulsepoll.org)



# Survey Specifics and Methodology

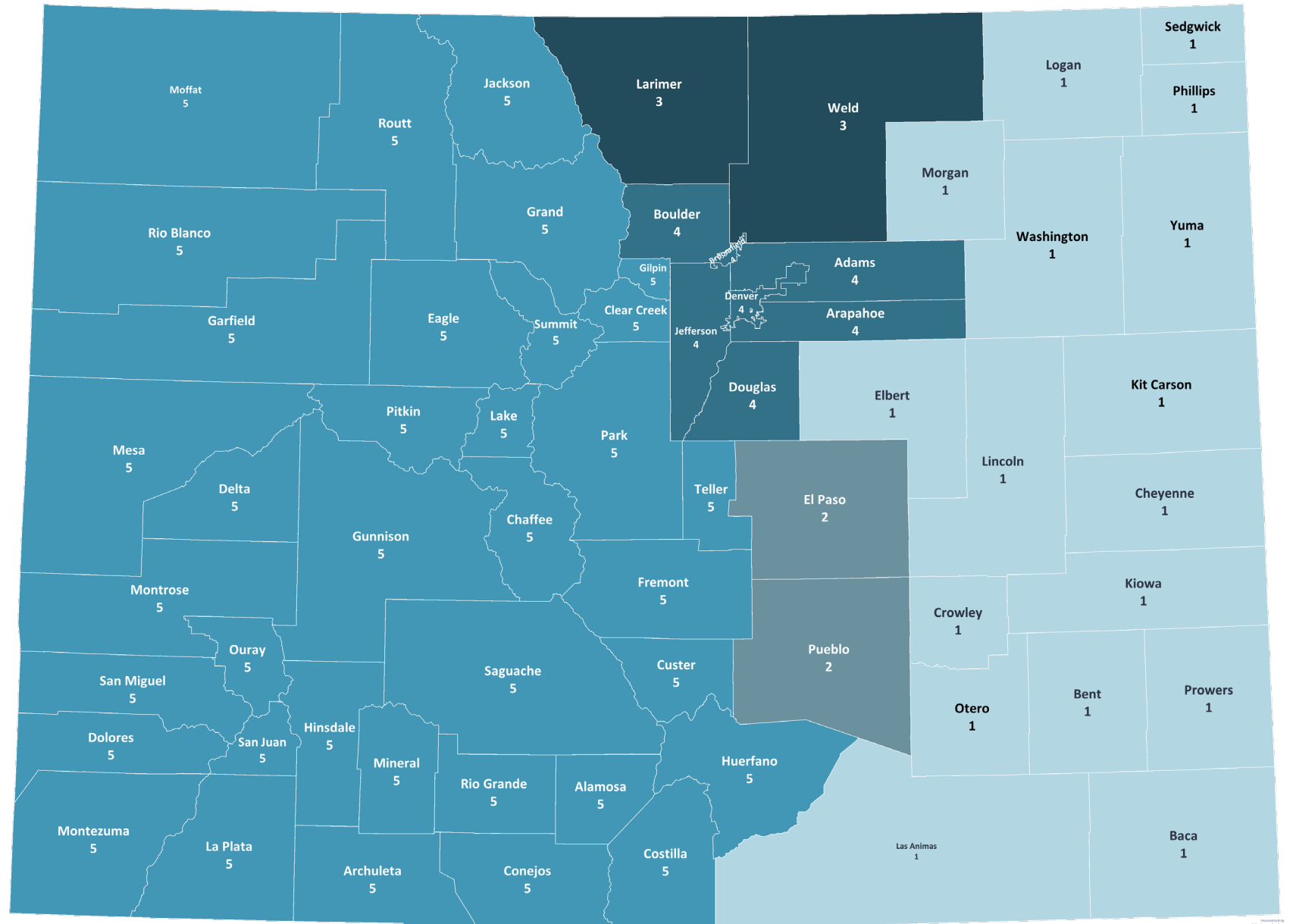
(Not All Results Will Sum to 100% Due to Rounding)

<b>Dates</b>	April 19-May 18, 2025
<b>Bipartisan Research Team</b>	FM3 Research (D) and New Bridge Strategy (R)
<b>Survey Type</b>	Dual-mode Phone and Online Survey of Adult Coloradans
<b>Research Population</b>	2,333 Coloradans including oversamples of Black/African-American, American Indian/Alaska Native, and Asian-American Coloradans, as well as residents of Morgan County
<b>Margin of Sampling Error</b>	±3.07% at the 95% Confidence Level
<b>Contact Methods</b>	 Telephone Calls  Email Invitations  Text Invitations
<b>Data Collection Modes</b>	 Telephone Interviews  Online Interviews
<b>Comparison Surveys</b>	Pulse polls fielded in 2020-2024
<b>Survey Languages</b>	English and Spanish



# Colorado Region Map

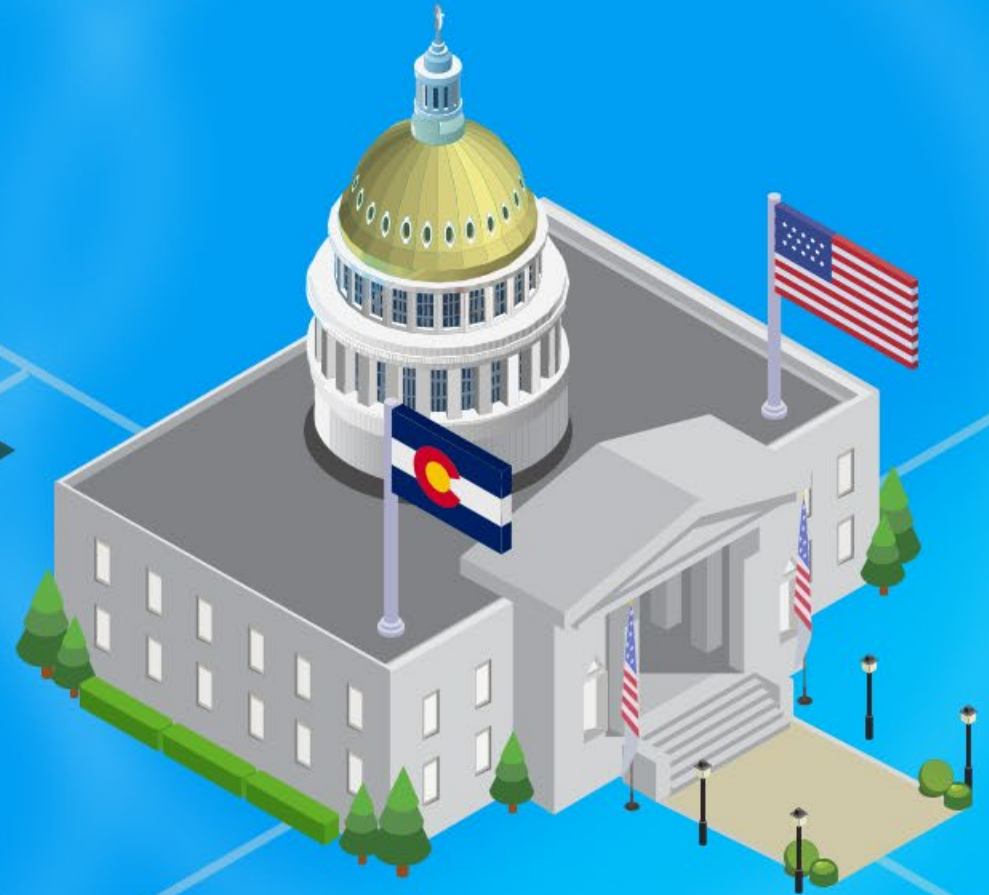
Eastern Plains (1)	2%
Colorado Springs (2)	15%
Larimer Weld (3)	12%
Denver Metro (4)	56%
Western Slope (5)	13%



20  
25

pulse  
The Colorado Health Foundation Poll

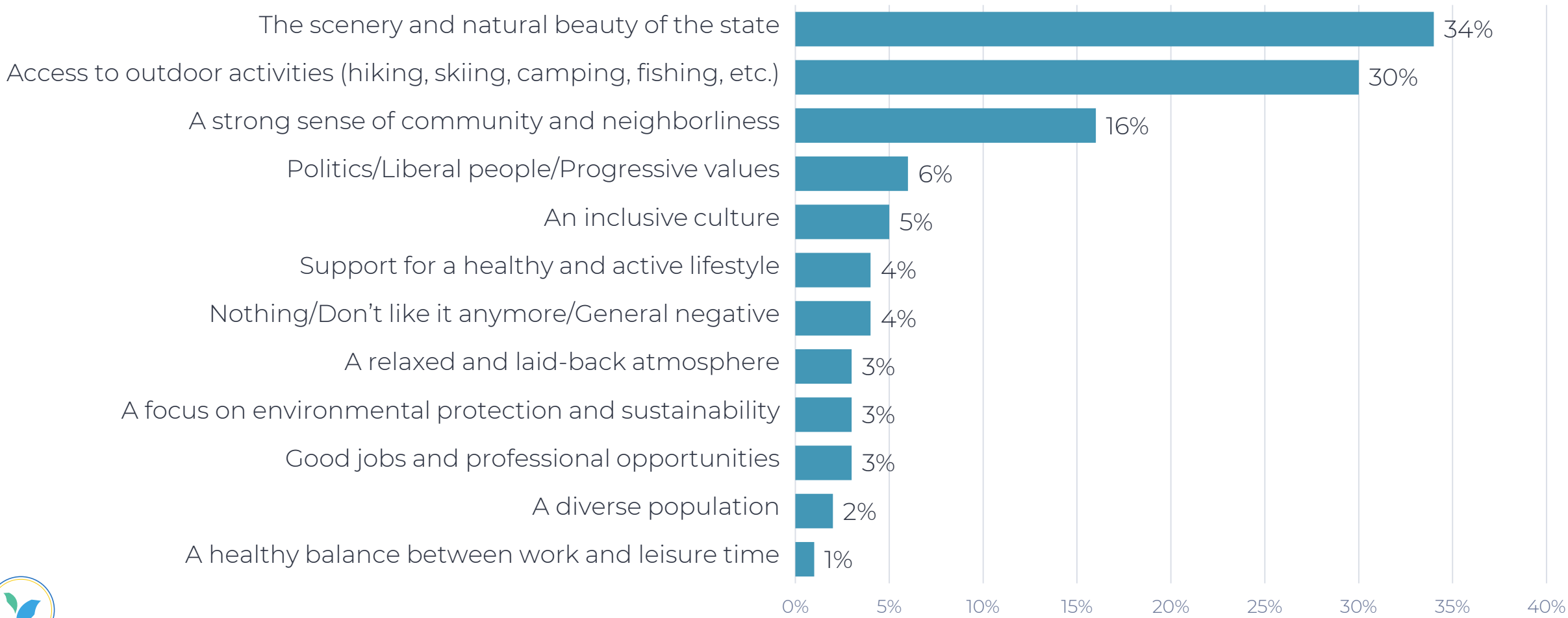
# Top Concerns for Coloradans



# Coloradans value the state's beauty, outdoor access, and a strong sense of community.

Q13. Next, other than the weather, which aspects of life in Colorado do you value most?

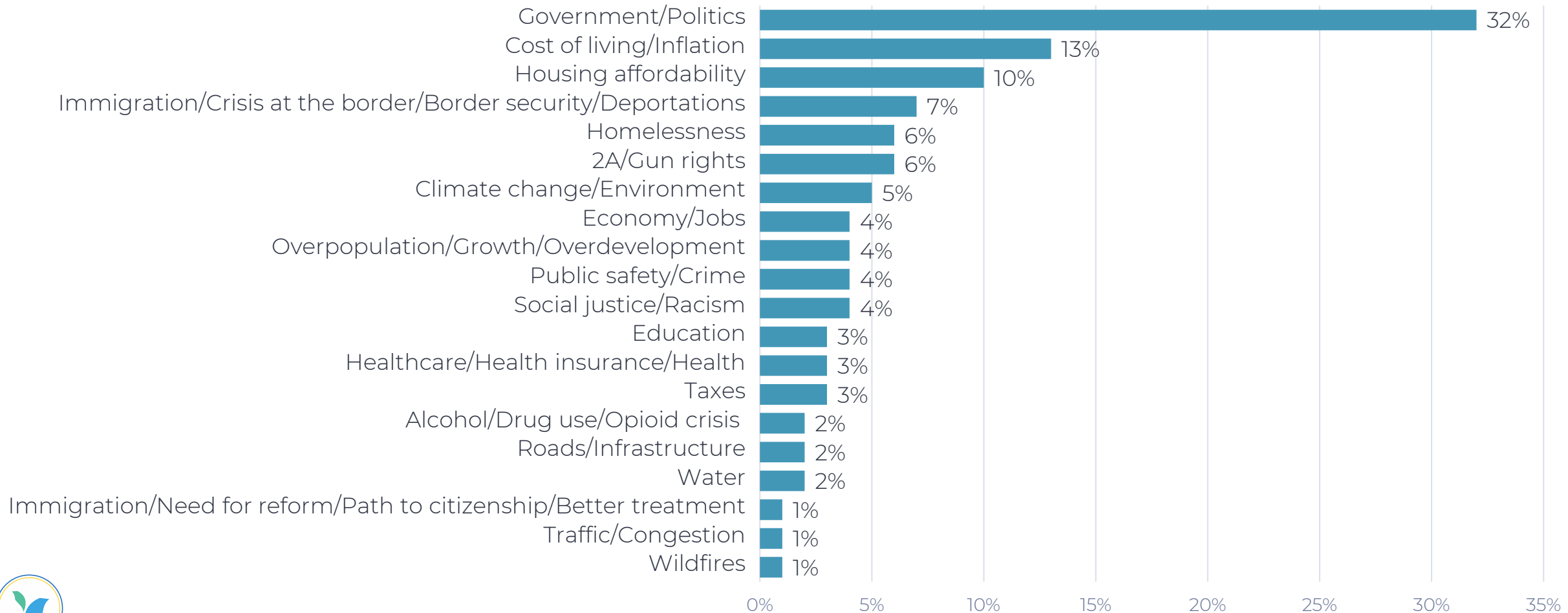
(Open-ended)



# Concerns related to government and politics are volunteered as the most important issues facing Colorado.

Q14. And in a few words of your own, what is the most important issue facing Colorado right now?

(Open-ended)



# All four of the issues facing the state that are rated most serious relate to costs and housing.

Q15. Please consider the following issues that some people suggest are problems facing Colorado. Please indicate whether you think it is an extremely serious problem, a very serious problem, a somewhat serious problem, or not too serious a problem for residents of Colorado.

**Ext./Very Ser. Prob.**

**89%**

**84%**

**75%**

**74%**

**65%**

**59%**

**58%**

**56%**

**55%**

The rising cost of living

57%

32%

9%

The cost of housing

55%

29%

13%

The cost of healthcare

44%

31%

16%

6%

Homelessness

37%

37%

21%

4%

Drug overdoses

32%

33%

24%

7%

4%

Mental health

24%

35%

30%

9%

4%

Jobs and the economy

26%

32%

28%

12%

4%

Wildfires or other natural disasters

23%

34%

31%

12%

4%

Crime, in general

28%

28%

33%

11%

4%

0%

20%

40%

60%

80%

100%

■ Ext. Ser. Prob.

■ Very Ser. Prob.

■ Smwt. Ser. Prob.

■ Not Too Ser. Prob.

■ Don't Know



20  
25

**pulse**  
The Colorado Health Foundation Poll

# Coloradans on the Margins



# A significant proportion of Coloradans have experienced financial challenges in the last year.

Q23b. In the last 12 months, have you experienced any of the following?

(% Yes)

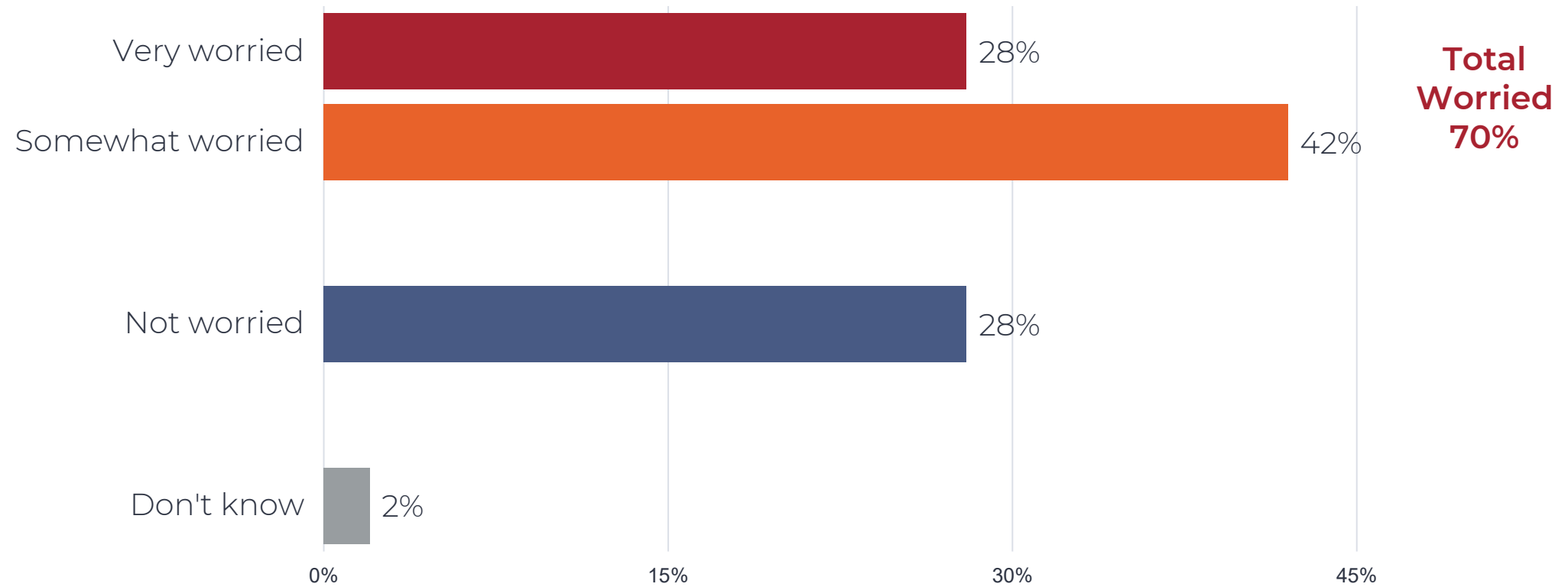


<b>30%</b> Postponed medical care	<b>33%</b> Postponed dental care	<b>19%</b> Had work hours cut back or wages reduced	<b>8%</b> Been laid off	<b>12%</b> Skipped meals because you couldn't afford food



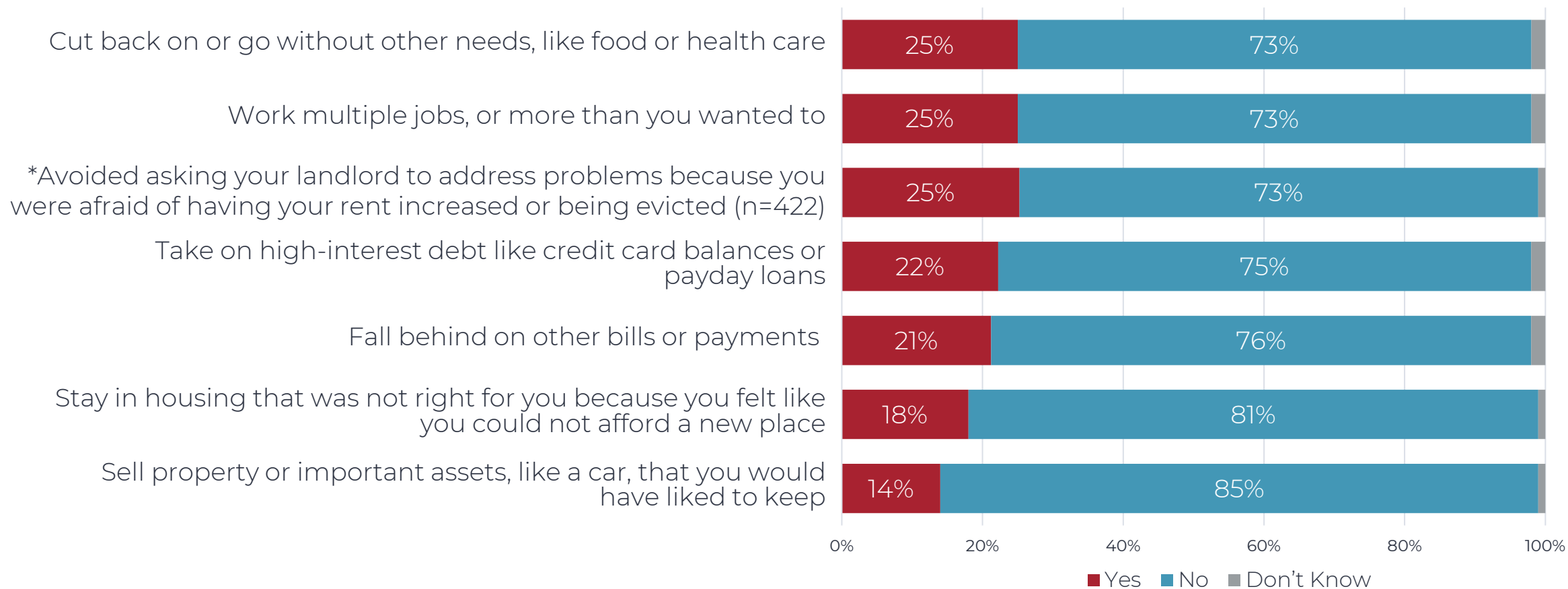
# Seven in ten are worried about affording to live in Colorado in the future.

Q24. Are you worried about whether you will be able to afford to live in Colorado in the future?



# About one-quarter of Coloradans report making a number of financial adjustments in order to afford housing.

Q31. In order to pay your rent or your mortgage in the last year, have you had to do any of the following:



\*Asked of Renters Only

20  
25

pulse  
The Colorado Health Foundation Poll

# Civic Engagement & Life in Colorado



# Concern around government and politics has risen dramatically

Q14. In a few words of your own, what is the most important issue facing Colorado right now?

(Open-ended)

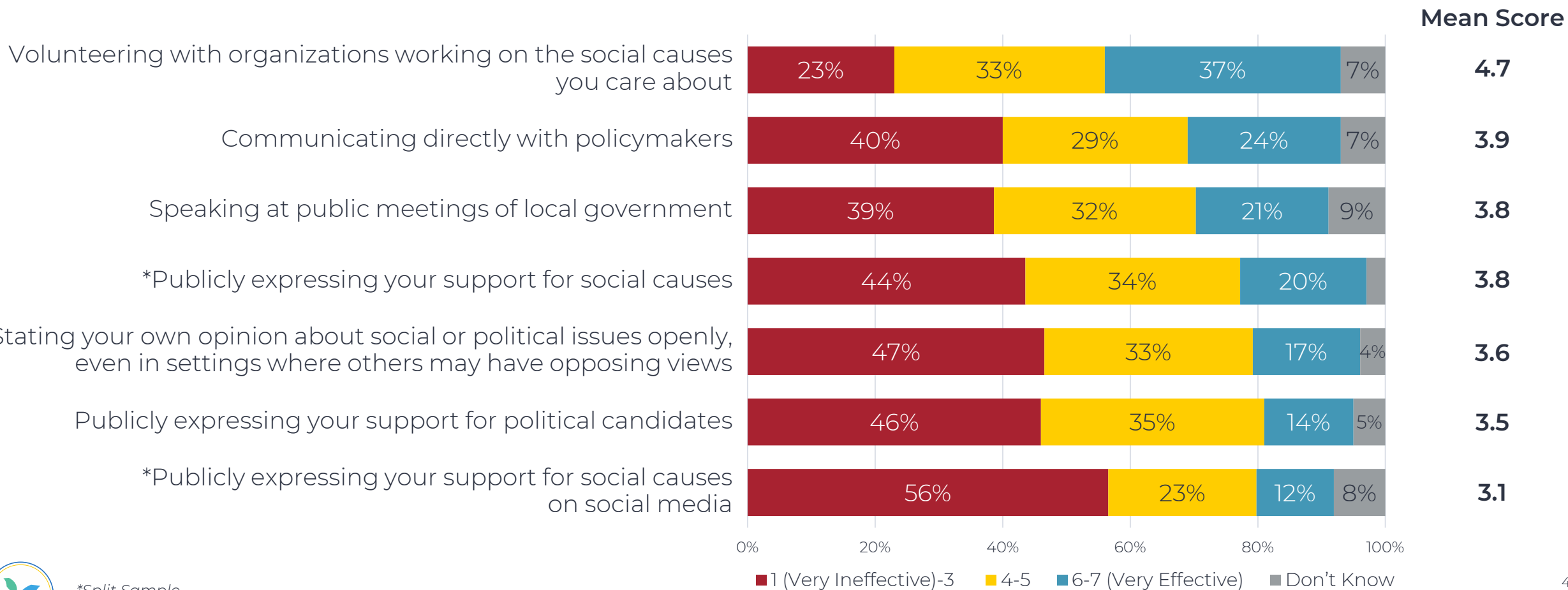
Issue	2020	2021	2022	2023	2024	2025	Difference (2024-2025)
Government/Politics	19%	14%	15%	13%	11%	32%	+21%
Economy/Jobs/Taxes	13%	12%	9%	7%	4%	7%	+3%
Water/Wildfires/Climate change/Environment	13%	20%	21%	16%	5%	8%	+3%
Social justice/Racism	5%	2%	2%	1%	2%	4%	+2%
Education	4%	3%	3%	3%	2%	3%	+1%
Traffic Congestion	6%	19%	13%	10%	1%	1%	0%
Roads/Infrastructure	--	4%	--	--	2%	2%	0%
Overpopulation/Growth/Overdevelopment	--	13%	--	--	4%	4%	0%
Alcohol/Drug use/Opioid crisis	--	--	--	--	2%	2%	0%
Healthcare/Health insurance/Health	8%	4%	4%	3%	5%	3%	-2%
Public safety/Crime	4%	5%	10%	12%	7%	4%	-3%
Homelessness	--	6%	7%	10%	10%	6%	-4%
° Immigration/Crisis at the border/Border security/Deportations	--	1%	2%	1%	13%	7%	-6%
Cost of living/Inflation	10%	7%	20%	16%	19%	13%	-6%
Housing affordability	--	10%	17%	15%	17%	10%	-7%
Immigration/Need for reform/Path to citizenship/Better treatment	--	--	--	--	10%	1%	-9%



\*Wording Slightly Different

# Volunteering for social causes is seen as the most impactful way of improving their community.

Q16. Here is a list of ways Coloradans can improve their community. Please indicate how effective you think this kind of activity is at improving your community, using a scale of one to seven, where “one” means very ineffective and “seven” means very effective. You may choose any number from one to seven.



\*Split Sample

# Urban residents are more likely to see volunteering as effective; suburban residents see more value in public expressions of support for causes.

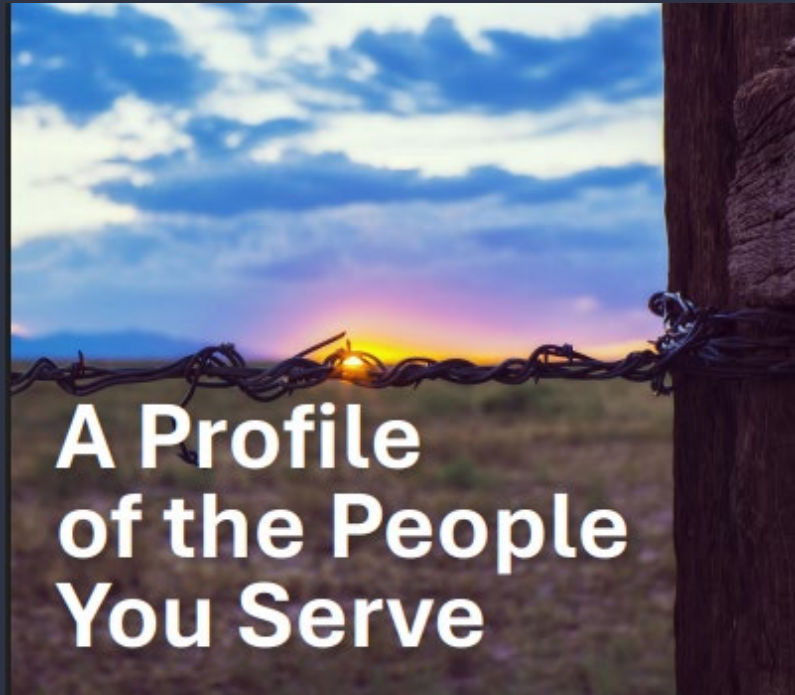
Q16. Here is a list of ways Coloradans can improve their community. Please indicate how effective you think this kind of activity is at improving your community, using a scale of one to seven, where “one” means very ineffective and “seven” means very effective. You may choose any number from one to seven.

(% 6-7 (Very Effective))

Activity	All	Urbanicity		
		Urban	Suburban	Rural
Volunteering with organizations working on the social causes you care about	<b>37%</b>	42%	35%	27%
Communicating directly with policymakers	<b>24%</b>	25%	27%	21%
Speaking at public meetings of local government	<b>21%</b>	21%	23%	16%
*Publicly expressing your support for social causes	<b>20%</b>	16%	31%	14%
Stating your own opinion about social or political issues openly, even in settings where others may have opposing views	<b>17%</b>	17%	19%	11%
Publicly expressing your support for political candidates	<b>14%</b>	13%	18%	9%
*Publicly expressing your support for social causes on social media	<b>12%</b>	13%	10%	12%



# New Resource: District Profiles



**A Profile of the People You Serve**

SENATE DISTRICT 8 FEBRUARY 2025

The Colorado Health Foundation | pulse

COLORADO HEALTH INSTITUTE | COLORADO HEALTH ACCESS SURVEY

## State Senate District 8

### Health Insurance

Medicaid membership is lower than the Colorado rate in this district. The uninsured rate is higher than the Colorado rate.

**7.7%** uninsured

Category	Senate District 8	Colorado
Employer-Sponsored Insurance	49.6%	53.0%
Medicare	14.9%	12.3%
Medicaid/CHIP+	15.6%	21.5%
Individual/Other	12.3%	7.3%
Uninsured	7.7%	5.9%

### Barriers to Health Care

Percentage of people who needed but didn't get medical care

**9.2%** of people in this district could not get doctor care they needed in 2025.

Barrier	Senate District 8	Colorado
Doctor Care	9.2%	11.4%
Specialty Care	13.2%	14.2%
Prescription	10.3%	12.3%
Dental Care	17.4%	18.1%

### Mental Health

Eight or more days of poor mental health in the past month, ages 5 and up

Year	District	Colorado
2015	10%	10%
2017	12%	12%
2019	15%	15%
2021	20%	20%
2023	20.5%	18%
2025	11.6%	15.2%

Needed but couldn't get mental health care: **11.6%** (District) vs **12.9%** (Colorado rate)

### Affordability

**31.5%** of people in this district had trouble paying for medical care, housing, or food in 2025.

Colorado rate: 33.7%

Category	District	Colorado
Medical Care	27.8%	27.5%
Housing	8.5%	11.3%
Food	6.7%	10.5%

Fielded February 11–July 21, 2025

## Congressional District 2

According to 2025 Pulse data, government and politics was cited as the top concern facing Colorado, followed by cost of living and housing affordability.

### Top contributors to mental health strain

Issue	C.D. 2	Colorado
Political issues	38.6%	32.2%
Financial issues	28.7%	28.6%
Family or relationship issues	9.2%	14.8%
Workplace issues	8.0%	8.1%

### Economic Well-Being

Living comfortably with increasing savings: District 27.4%, Colorado 22.3%

Living comfortably but not increasing savings: District 39.4%, Colorado 37.8%

Just getting by financially: District 22.3%, Colorado 29.6%

Really struggling financially: District 8.5%, Colorado 8.7%

### In order to pay the rent or mortgage:

District 20.2% Had to cut back on other needs like food or health care

District 22.2% Had to get a second job or work extra hours

District 20.1% Took on high-interest debt like credit cards or payday loans

### Are you worried about whether you will be able to afford to live in Colorado in the future?

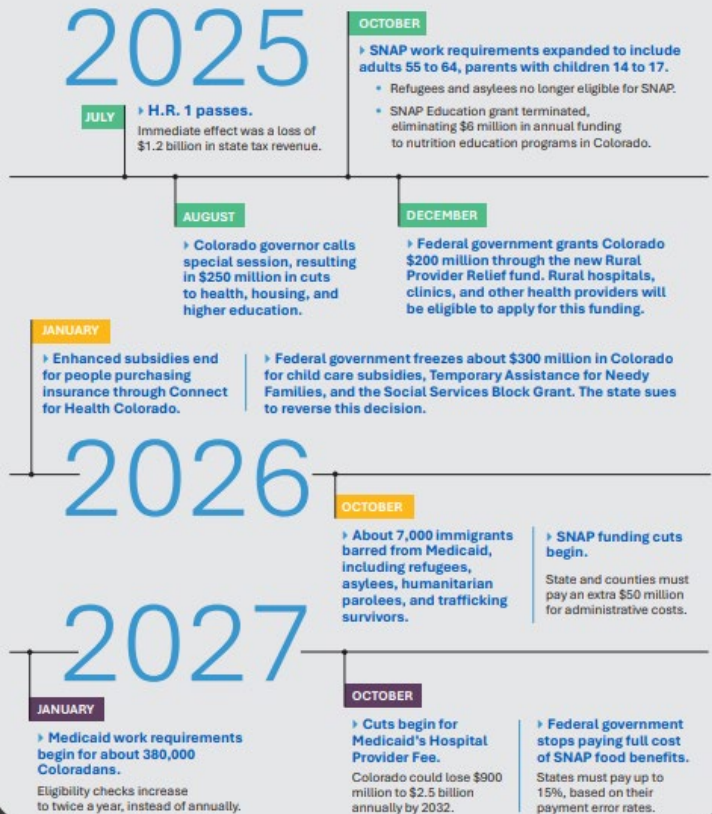
Colorado 78.2%

C.D. 2 66.6%

Fielded April 19–May 18, 2025

## Context of Federal Funding for Your Constituents

Actions taken by the federal government through the passage of H.R. 1 will have significant impacts on the lives of Coloradans. This timeline is shared to inform decisions made by Colorado policymakers.



## Legislative and Congressional District Profiles:

<https://coloradohealth.org/legislative-district-profiles>

## Find your legislator/district:

<https://leg.colorado.gov/find-my-legislator>

**Pulse:** [www.copulsepoll.org](http://www.copulsepoll.org)

**CHAS:** [colo.health/CHAS](http://colo.health/CHAS)

# Engage with future CO Leaders

## Candidate Forums:

- Congressional District 8 Democratic Candidate Forum  
The University of Northern Colorado  
May 28, 2026 at 6 p.m.
- Gubernatorial Forum  
June 13 (details being finalized)
- Attorney General Forum  
June 9 or 10 (details being finalized)
- Fall Forums (dates TBD)

*Livestreamed events. Simultaneous translation*

*Submit questions! Host a watch party.*



# CONTACT US

---

[www.copulsepoll.org](http://www.copulsepoll.org)

## **ALEXIS WEIGHTMAN**

Senior Govt Affairs Manager  
Colorado Health Foundation  
[aweightman@coloradohealth.org](mailto:aweightman@coloradohealth.org)

## **KATIE PESHEK**

Senior Communications Officer  
Colorado Health Foundation  
[kpeshek@coloradohealth.org](mailto:kpeshek@coloradohealth.org)